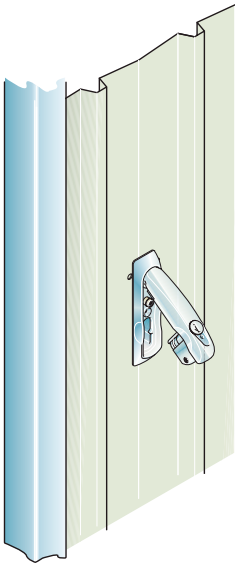




EFFLK 50SQ

Flush Mount Sliding Door Lock Fitting Instructions



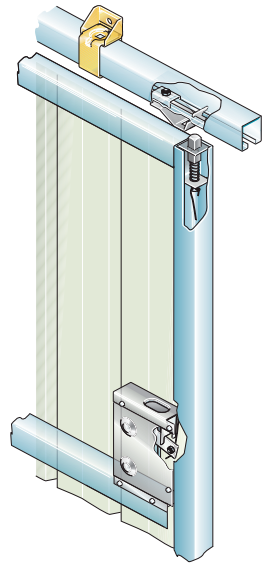
Safe and Secure:
Lock cylinders may be keyed to your existing master key system*.

All working parts are enclosed within the door frame.

Simple swing-out handle operation.

Simple tek screw assembly with any new or existing 50SQ door frame in just minutes!

*May not be suitable for all master keyed systems



Flush Mounting and individually operated - Suits single or multiple doors on single or multiple tracks.

Allows door to 'slide-past' without interference or increased clearances.

Flush Mount Sliding Door Lock

Fitting Instructions

1. Cut a hole in the SRS door frame [1] -

On the inside face where the lock pin assembly [2] is to be fitted for the cable arm [12] (30mm x 110mm - 60mm up from horizontal rail [1A].)

2. Fit the cable to latch pin [3] -

Insert the cable through the hole in the end of the pin and tighten the bolt to clamp the cable in place.

3. Tek screw lock pin assembly in position -

Locate the lock pin assembly [2] flush with the top of the door and secure with tek screws [4]. Note: Drop the cable down inside the tube.[4a] Tek screw on the inside of the door frame.

4. Fix lock mounting plate [5] -

50mm from the VERTICAL door member, position the mounting plate and fix to the HORIZONTAL rail. [5a]

5. Cut out holes in cladding sheet -

Put the first cladding piece in place. Using the lock mounting plate [5] as a template, mark out the position for the lock. Remove the sheet and cut out marked holes. Refit the sheet to the door frame and check it lines up with the lock mounting plate. [5b]

6. Install lock barrel into the lock body [6] -

Check the operation of the lock is working. Remove 20mm nut & washer [6a] and fit to the lock mounting plate [5]. Refit nut & washer and tighten. Install button head screw M4x8 [7] to the inside of the lock body [6] and then pull out the handle to fit countersunk bolt nut M5x12 [8] from the front and tighten.

7. Fit the lock arm [9] to the square shaft -

Make sure the short leg is facing backwards (to the back of the door). Fit the M10 hex nut [10] and tighten.

8. Fit cable clamp bolt in cable arm -

Thread the cable through [11] the hole in the bolt and lightly tighten the nut. Position the cable arm [12] on to the square shaft of the lock body [6] and ensure the cable arm is horizontal, adjust the cable length to suit and tighten nut on to the clamp bolt. Check operation and adjust if required. Fit the Nylock nut [13] to the square shaft. DO NOT tighten - This nut must be firm but still allow the cable arm to rotate freely on the shaft.

9. Position the lock cover [14] -

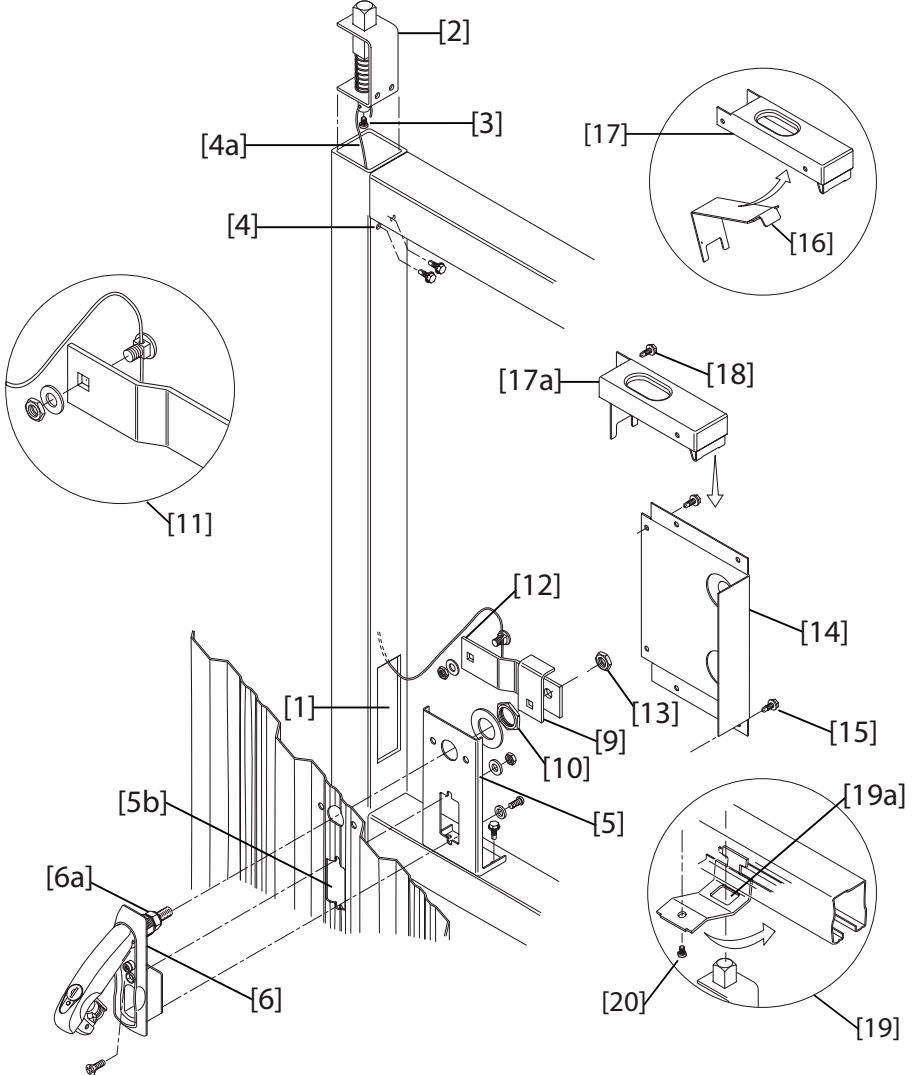
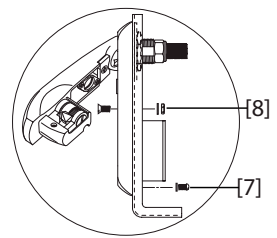
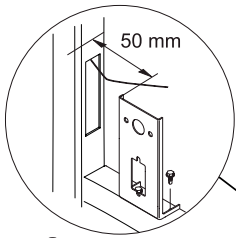
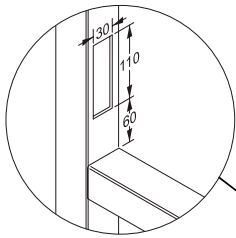
Position with the door frame & the horizontal rail and fix with 4 tek screws [15] and clip the inner arm [16] into the top cover [17]. (Cut off the inner tab [17a] on the top corner to suit either LEFT HAND or RIGHT HAND fitment.) Fit the top cover and tek screw in position [18]. Check operation of the inner operating mechanism & lever lock.

10. Fit the latch plate & bracket [19] -

Fit to the door track and slide into the position that the door is to be locked in, lining up the square hole [19a] in the latch plate with the lock pin. Insert M8x40 hex bolt [20] through the latch plate and into the fixing bracket and tighten.

11. Your Eltrak EFFLK SQ50 flush mount sliding door lock is now fitted!

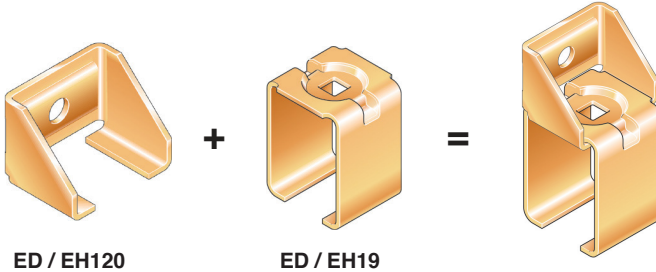
Please check operation, adjust as required and ensure all bolts and screws are in place and properly tightened.



Products we recommend:

COMBINATION BRACKETS

- BOLT ON • WELD ON • SIDE FIX
- Patent • Registered Design



ED / EH120

ED / EH19

TRACK MASTER SIDE THRUST - STEEL

- FULL INDEPENDENT SWIVEL BODY
- HD BALL BEARING RACE

- Patent • Registered Design



"The only
carriages in the world
designed to beat wind
load!"

ADELAIDE

Vater Hardware
28-32 Morgan Street
Wingfield, SA 5013
Tel: 08 8268 3511
Fax: 08 8445 7470
info@eltrak.com.au

SYDNEY

Vater Hardware
2/78 Heathcote Road
Moorebank, NSW 2170
Tel: 02 8777 0777
Fax: 02 8777 0778
sydney@vaterhardware.com

BRISBANE

Vater Hardware
2/388 Newman Road
Geebung, QLD 4034
Tel: 07 3265 7888
Fax: 07 3265 7688
brisbane@vaterhardware.com

MELBOURNE

Vater Hardware
18-24 Pelson Court
Dandenong Sth, VIC 3175
Tel: 03 9799 7400
Fax: 03 9799 7422
melbourne@vaterhardware.com

PERTH

Vater Hardware
56 O'Malley Street
Osborne Park, WA 6017
Tel: 08 9492 8444
Fax: 08 9244 5635
perth@vaterhardware.com